

# UNOCAL



## UNOCAL

广州优尼卡塑料容器有限公司  
GUANGZHOU UNOCAL PLASTIC CONTAINER CO.,LTD

地址: 广州市从化区太平镇福从路22号





# GUINOCAL



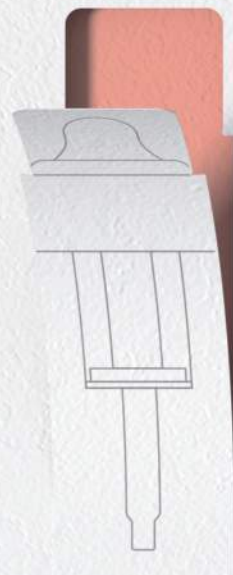
广州优尼卡塑料容器有限公司是一家专业生产化妆品包材的制造商，产品以真空瓶、广口瓶、PET吹瓶、滴管为主。公司一直坚持创新与品质优先，拥有一支专业的技术研发及创新团队。

在每一个产品的开发过程，我们会花更多的时间去考虑和调研零部件的材质、与物料兼容性、配合程度及量产过程。

在品质方面，我们更关注品质管理体系更加规范化，培养专业的检测团队和拥有完善的检测设备，健全的品质管理制度，培养质量意识，从源头严格把好质量关。

我们关注对细节的专注，只想为客户提供更好的包材与服务体验。





03

双腔混合系列  
Duo-Mix Series

09

滴管  
Dropper

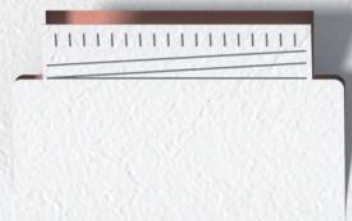
- 20牙厚壁滴管  
20Neck Heavy-wall Dropper
- 26牙厚壁滴管  
26Neck Heavy-wall Dropper
- 滴管精华瓶  
Ampoule Dropper



15

广口瓶  
Jar

- 广口瓶-A&E  
JAR A&E
- 厚壁PET广口瓶  
HEAVY-WALL PET JAR



PRODUCT  
CATALOG

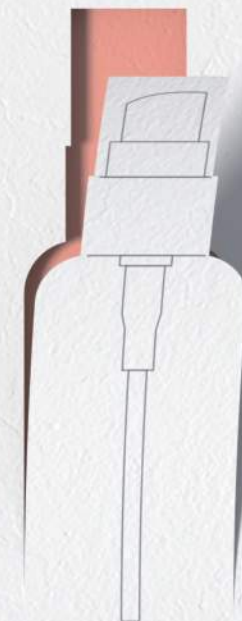
产品目录



17

真空瓶  
Airless Bottle

- SVD
- SVD33
- FVD
- TVD
- PY&PH
- PA&PD
- DCD



24

PET吹瓶  
PET Bottle

- PET化妆水瓶  
PET Toner Bottle
- PET吹瓶  
PET Lotion Bottle



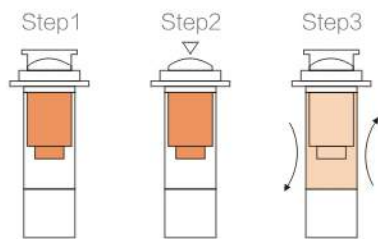




## DUO-MIX AMPOULE DROPPER

双腔混合安瓶滴管

CAP: PP  
Ring: ABS  
Outer: PETG  
Inner: PP



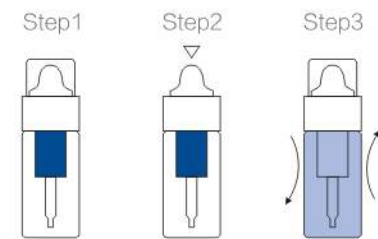
Icon	ml	mm	mm
	2+6	Ø37	86.4
	5+3	Ø37	86.4
	5+5	Ø37	96.2



## DUO-MIX DROPPER

双腔混合伸缩滴管

CAP: PETG  
Collar: PETG  
Outer: Heavy-wall PET  
Inner: PP



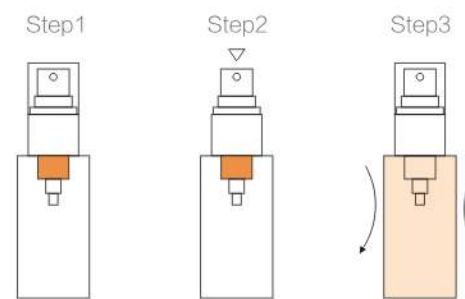
Icon	ml	mm	mm
	3+20	Ø35	89
	3+30	Ø35	104
	3+30	Ø42	104



## DUO-MIXED BOTTLE

双腔混合瓶

CAP: PETG  
 CHAMBER: PETG  
 BOTTLE: AS/PETG/HEAVY-WALL PET



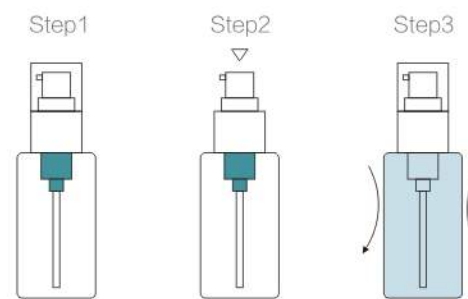




## DUO-MIXED BOTTLE

双腔混合瓶

CAP: PETG  
 CHAMBER: PETG  
 BOTTLE: PET/HEAVY-WALL PET







**DROPPER**  
**20NECK HEAVY-WALL DROPPER**

滴管-20牙厚壁滴管

BOTTLE: HEAVY-WALL PET

Icon	ml	mm	mm
Cylindrical bottle with cap	20	Ø33	79.0
	30	Ø38	86.0
	50	Ø38	105.0
Cylindrical bottle without cap	30	Ø36	96.0
	50	Ø39	105.5
Rounded bottle without cap	30	Ø37	96.0
	50	Ø40	103.4
Rectangular bottle without cap	30	Ø38	88.6
	50	Ø38	108.6
Rectangular bottle with cap	30	Ø46	87.5
	50	Ø46	105.0










**DROPPER**  
**20NECK HEAVY-WALL DROPPER**

滴管-20牙厚壁滴管

BOTTLE: HEAVY-WALL PET

	ml	mm	mm	mm
	20	Ø33	83	87.2
	30	Ø38	90	94.2
	50	Ø38	109	113.2
	30	Ø36	100.1	104.3
	50	Ø39	109.5	113.7
	30	Ø37	100.1	104.3
	50	Ø40	107.5	111.7
	30	Ø38	92.8	97.1
	50	Ø38	112.8	117
	30	Ø46	91.5	95.8
	50	Ø46	109	113.2





**DROPPER**  
**26NECK HEAVY-WALL DROPPER**

滴管-26牙厚壁滴管

BOTTLE: HEAVY-WALL PET

Icon	ml	mm	A: mm	A: mm
Bottle icon	20	Ø33	77.3	92.3
	30		95.3	110.3
	50	Ø37	100.0	115



**DROPPER**  
**AMPOULE DROPPER**

滴管-滴管精华瓶

CAP: PP  
OTTLE: PETG

Icon	ml	mm	A: mm
Ampoule icon	10	Ø26	70.3
	15		88.6





## JAR A&E

广口瓶-A&E

CAP: PETG/ABS  
 OUTER: PS/AS  
 INNER: PP

Icon	ml	mm	mm
Jar A&E (Orange)	15	Ø53.7	29.8
	30		40.4
	50		56.2
Jar A&E (White)	15/20	Ø55	36.6
	30		46.6
	50		56.0



## HEAVY-WALL PET JAR

厚壁PET广口瓶

CAP: PETG/AL  
 LID: LLDPE  
 JAR: HEAVY-WALL PET

Icon	ml	mm	mm
Jar (Black)	30	Ø54	36.8
	50	Ø64	43.6
Jar (Gold)	30	Ø54	35
	50	Ø64	41
Jar (White)	30	Ø54	35.3
	50	Ø64	42
Jar (Purple)	30	Ø54	33
	50	Ø64	39





## AIRLESS BOTTLE SVD

真空瓶-SVD

CAP: PETG  
COLLAR: PP/ABS  
BOTTLE: PETG

Icon	ml	mm	mm
[Icon of bottle with cap]	20	Ø30	97.5
	30		116.1
	40		134.5
	50		152.4
[Icon of bottle without cap]	20		97.5
	30		116.1
	40		134.5
	50		152.4



## AIRLESS BOTTLE SVD33

真空瓶-SVD33

CAP: PETG  
COLLAR: PP/ABS  
BOTTLE: PETG

Icon	ml	mm	mm
[Icon of bottle with cap]	20	Ø33	98.5
	30		116.4
	40		134.4
	50		152.2
[Icon of bottle without cap]	20		98.5
	30		116.4
	40		134.4
	50		152.2





## AIRLESS BOTTLE FVD

真空瓶-FVD

CAP: PETG  
COLLAR: PETG  
BOTTLE: PETG

Icon	ml	mm	mm
	30	Ø45	88.1
	50		103.4
	100		164.2
	30		85.0
	50		100.3
	100		143.1



## AIRLESS BOTTLE TVD

真空瓶-TVD

CAP: PETG  
COLLAR: PP/ABS  
BOTTLE: PETG

Icon	ml	mm	mm
	30	Ø41	99.3
	50		115.7
	100		162.7





## DOUBLE-WALL AIRLESS BOTTLE PY & PH

双层真空瓶-PY & PH

CAP: PETG  
COLLAR: PP/PETG  
OUTER: AS  
INNER: PP/PETG

Icon	ml	mm	mm
	50	Ø45	115.2
	30	Ø43	122.5 109.1 114.6



## DOUBLE-WALL AIRLESS BOTTLE PA & PD

双层真空瓶-PA & PD

CAP: PETG  
COLLAR: ABS  
OUTER: PS  
INNER: PP

Icon	ml	mm	mm
	20	Ø37	105.1
	30		127.5
	20	Ø43	104.5
	30		126.7
	20	Ø45	115.8
	30		140.7
	20	Ø45	116.6
	30		141.6



## DUAL TUBE AIRLESS BOTTLE-DCD

### 双管真空瓶-DCD

CAP: PETG  
COLLAR: PP  
OUTER: AS/ABS  
INNER: PP

Icon	ml	mm	mm
[Icon]	10×2	Ø48	113.3
	15×2		113.3
[Icon]	30×2	Ø59	141.3



## PET TONER BOTTLE

### PET化妆水瓶

CAP: PETG  
BOTTLE: PET

Icon	ml	mm	mm	
[Icon]	50	Ø33	92.8	
	80		131.7	
	80		97.7	
	100	Ø41	114.0	
	120		127.4	
[Icon]	150	Ø41	153.3	
	100		Ø37	147.6
	80		Ø41	107.3
	100		Ø41	123.7
	120		Ø41	137.0
	150		Ø41	162.9





## PET LOTION BOTTLE

PET吹瓶

CAP: PETG  
COLLAR: PP/ABS  
BOTTLE: PET

Icon	Capacity (ml)	Collar Diameter (mm)	Bottle Height (mm)
Icon 1 (Shorter)	50	Ø33	118.0
	80		156.9
Icon 2 (Taller)	50	Ø41	98.3
	80		120.5
	100		137.5
	120		151.3
	150		177.3

